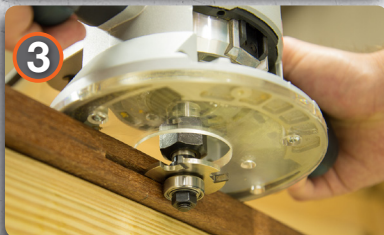
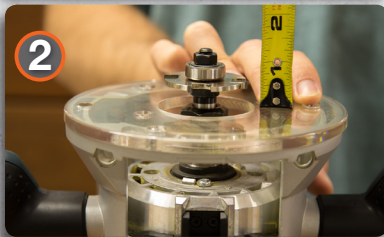
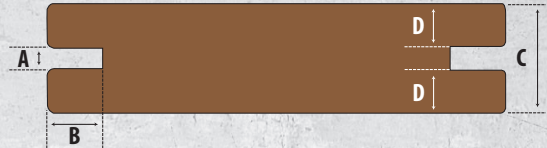


DeckWise[®], The Ipe Clip[®] Fastener Company, LLC • 2111 58th Ave. E, Bradenton, FL 34203
Tel: 941-896-9851 • Toll Free: 866-427-2547 • info@DeckWise.com • www.DeckWise.com



Warning - Do not use bit if dull, cracked or damaged. Bits exceeding 1" diameter should be mounted in a router table. Never exceed maximum (16,000 RPM) recommended for this bit. (Visit www.deckwise.com/safety for additional safety instructions.)

DECK GROOVE PROFILE



A = 5/32"

B = 1/2"

C = Measurement of deck board thickness

D = (C-A)/2 *Note: this will center the groove in the board*

SAFETY EQUIPMENT

- Eye Protection
- Dust Mask
- Ear Plugs

CUTTING SLOTS WITH A HAND HELD ROUTER

Make sure the deck board is securely clamped to work area using a clamp at each end.

STEP 1 - Insert Router Bit

ALWAYS unplug the power cord before removing or installing router bit. Insert the bit until the arbor (shank) hits the bottom of the collet chuck; then ease it out about 1/8" to 1/4" before tightening the collet.

STEP 2 - Set Router Depth

Adjust the bit to the correct depth following the deck groove profile above. (Visit www.deckwise.com/deck-groove-profile for more details on the groove profile.)

STEP 3 - Cut Slots in Deck Board

Place the baseplate on the edge of the board so the router bit is in position. Turn on router and grasp the router with both hands. Do not allow the bit to come in contact with the wood until the router is up to full speed. Moving from left to right, plunge the cutting bit in the side of the deck board above each joist and cut a slot roughly the width of the joist. Turn off router.

STEP 4 - Fit Ipe Clip[®] in Deck Board Slot

The DeckWise[®] Ipe Clip[®] should slide into the slot above the joist with the legs flush against the side of the deck board. Make sure the top of the clip is level in the slot above the joist.